

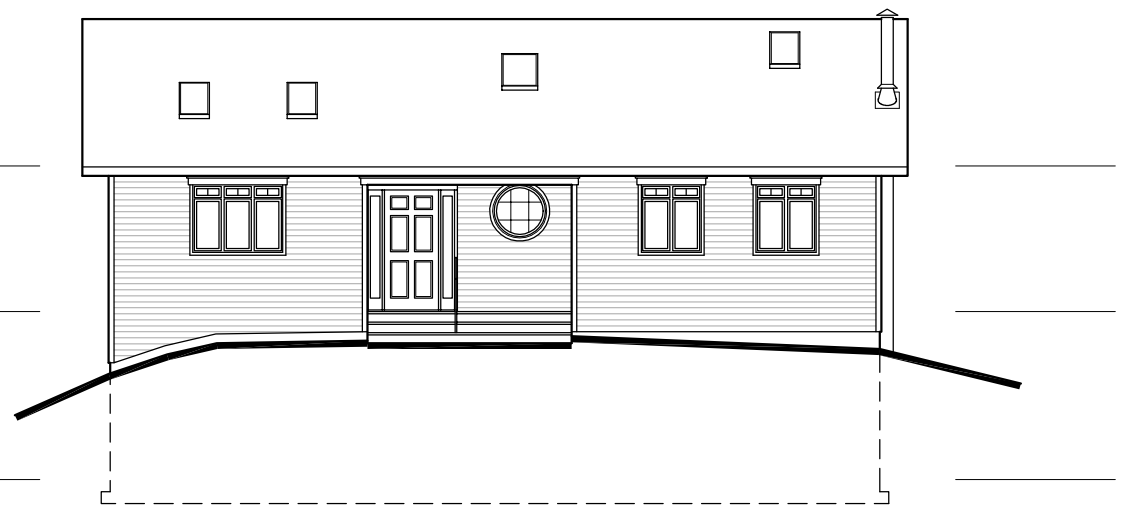


WEST ELEVATION

TRUSS BEARING  
ELEV. 8'-1"

MAIN FLOOR  
ELEV. 0'-0" (93.17')

BASEMENT FLOOR  
ELEV. -9'-4" (83.80')



SOUTH (FRONT) ELEVATION

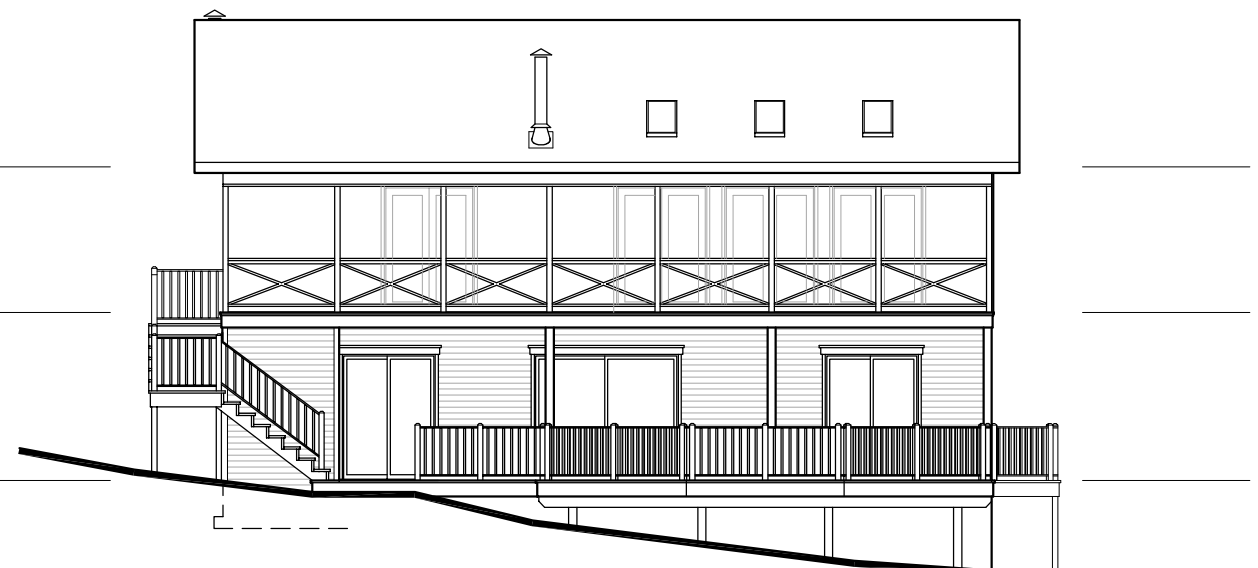


EAST ELEVATION

TRUSS BEARING  
ELEV. 8'-1"

MAIN FLOOR  
ELEV. 0'-0"

BASEMENT FLOOR  
ELEV. -9'-4"



NORTH (REAR) ELEVATION